



# TWO16+

## INVISIBLE LOCK FOR 2 SLIDING WOODEN DOORS

With the Two sliding door lock, you lock two doors with one lock.

The lock is fixed inside the doors. It is invisible from outside.

The lock locks automatically after 3 seconds. As soon as you close the door, the lock activates to lock.

### Useful at:

- Wooden sliding doors
- Maximum 2 doors

### Technology:

- RFID 125 kHz (EM4102 / EM4200)
  - up to 30 mm with RFID key cards
  - up to 20 mm with RFID key chips
- RFID 13.56 MHz (Mifare)
  - up to 20 mm with RFID key cards
  - up to 10 mm with Mifare debit and credit cards
  - up to 15 mm with RFID key chips

Access control feature with a programming card

### Features:

- Battery driven (with 'battery low' alarm)
- Up to 20,000 cycles per battery
- Programmable without any pc or software
- Simple to install



## SPECIFICATION

The total distance is calculated by thickness of the door + distance between the doors.

### The Package includes:

- lock
- 2 screws for the lock
- adjustment plate for the lock (1 mm)
- locking part
- 2 screws for the locking part
- adjustment plate for the locking part (1 mm)

### Packaging:

- in a box 155/100/40 mm

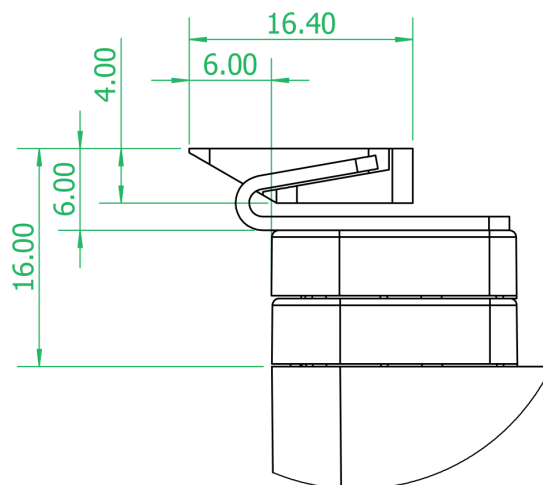
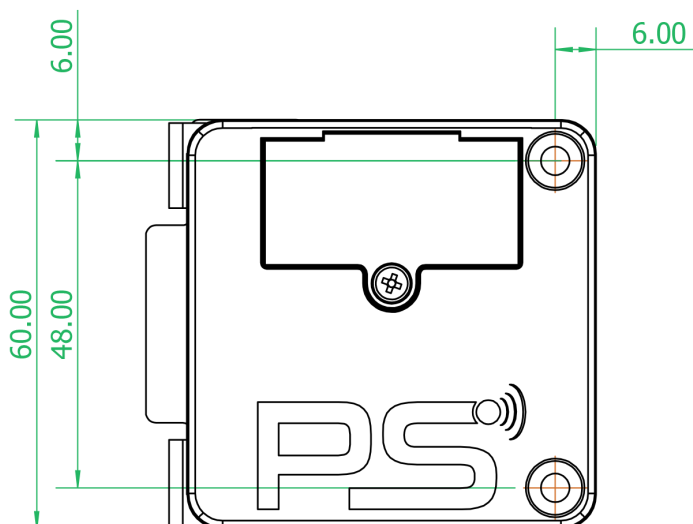
### Variations:

- Two16+ = for 16 mm total distance

### Mifare article numbers:

- Two16M+

Article number:	Two16+
Customs tariff number:	83013000
Order quantity:	100



DETAIL A

