

## INVISIBLE LOCK FOR 2 SLIDING WOODEN DOORS

The TWO secures two sliding doors at the same time. The lock parts are installed on the inside furniture panels where the two sliding doors meet. When unlocked the sliding doors can move freely past each other. Once the sliding doors are closed the two lock parts come together and lock automatically. The TWO secures your sliding doors in a sleek, unobtrusive way.

### Useful at:

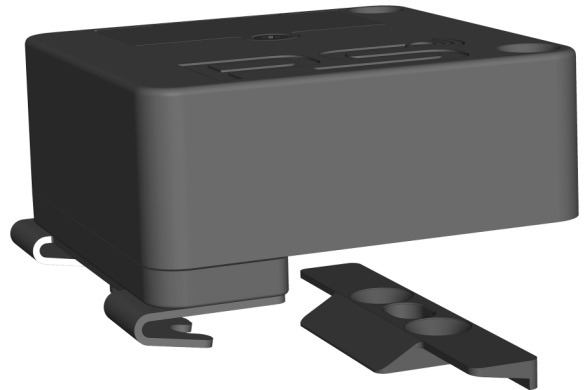
- Wooden sliding doors
- Maximum 2 doors

### Technology:

- RFID 125 kHz (EM4102 / EM4200)
  - up to 30 mm with RFID key cards
  - up to 15 mm with RFID key chips
- RFID 13.56 MHz (Mifare ISO 14443A)
  - up to 20 mm with RFID key cards
  - up to 10 mm with Mifare debit and credit cards
  - up to 15 mm with RFID key chips

### Features:

- Battery driven (with 'battery low' alarm)
- Up to 20,000 cycles per battery
- Programmable without any pc or software
- Simple to install
- Range of Temperature: 5 - 35°C
- Access control with a programming card for up to 49 users.



## SPECIFICATION

The total distance is calculated by thickness of the door + distance between the doors.

### The Package includes:

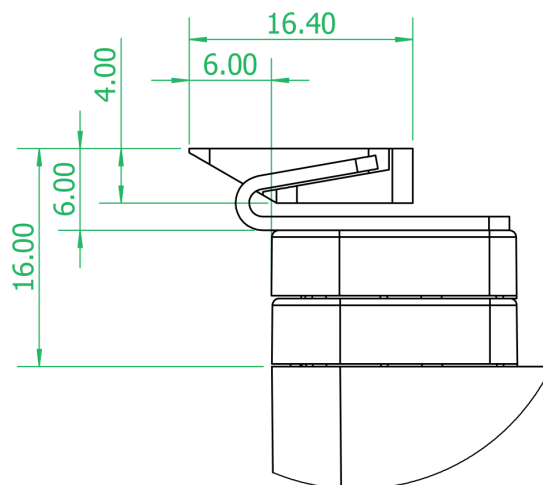
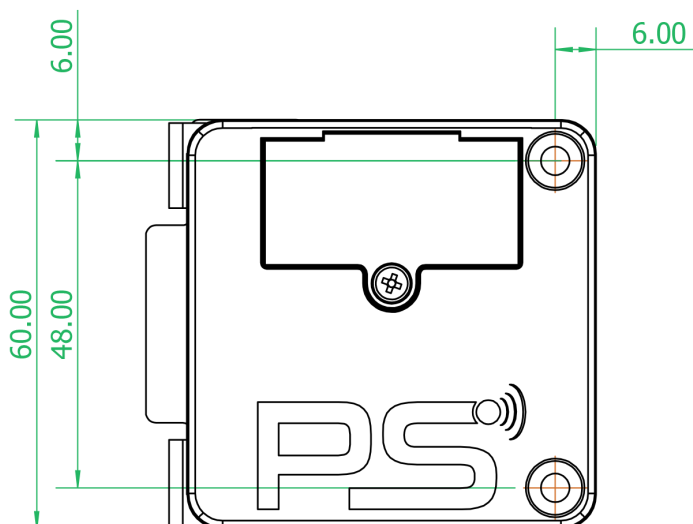
- lock
- 2 screws for the lock
- adjustment plate for the lock (1 mm)
- locking part
- 2 screws for the locking part
- adjustment plate for the locking part (1 mm)

### Variations:

- Two16+ = for 16 mm total distance

Article number:	TWO 125 16+ / TWO 13 16+
Customs tariff number:	83013000
Order quantity:	100
Country of origin:	Austria





DETAIL A

