

# FIT CABINETLOCK WITH FREE | OCCUPIED LED SIGN

FIT- the electronic furniture lock with free/occupied LED sign, for use with free cabinet selection.

The lock is mounted on the fixed cabinet/drawer and the tolerant locking part on the freely movable door.

The lock is operated with RFID cards, Bluetooth or for system developers via external relays. The range of the RFID cards is 22 mm - for thicker doors it is possible to extend the antenna for further 10 mm, which then have to be milled into the door.

This lock was mainly developed for use in fitness studios. The lock is operated with a 13.56 MHz (Mifare) Rfid card.



## LED Indicator:

When closing, the cabinet door is pressed shut and the card is presented until the light turns red. To open, the card is presented again, thus the LED turns green, which means that the cabinet is opened again.

## Power consumption:

With a 12V power supply, the FIT lock is free of usage of batteries. The power consumption is very low at 50 mA, 0.6 watts are required. Up to 20 locks can be supplied per power supply. Every lock has a 1.8 m long cable, which can be extended with one or more FIT extension cables, a cable is 2m long. Each six cables are connected to a FIT extension 6m and continued. The cable can be directly connected with the power supply or the next FIT extension.



## Delivery:

- Latch75
- Adjustable antenna
- 1,8 m cable

## Accessories:

- FIT extension cable 2 m
- FIT extension—for 6 plugs
- 12 V Power Supply—for 6 plugs
- Tip-On/ Push to Open
- power supply

ARTICLE NUMBER	FIT13
CUSTOMS TARIF NUMBER	83013000
COUNTRY OF ORIGIN	Austria

## Extension cable

The cable is used to extend the cable on the lock and has a length of 2m. Up to 10 cables can be plugged together.



## Dispatcher

Up to 6 cables can be connected to the dispatcher, these can either come directly from the lock or be an extension of the cable. With a cable length of 2m, the distributor can be plugged directly into the power supply or into another dispatcher.



## Applications

Public Mode | free locker choice

Free lockers can be locked by RFID /Mifare cards and only the card used for this purpose can open this locker again. For emergency opening, an authorised person has an administrator card with which all lockers can be opened.

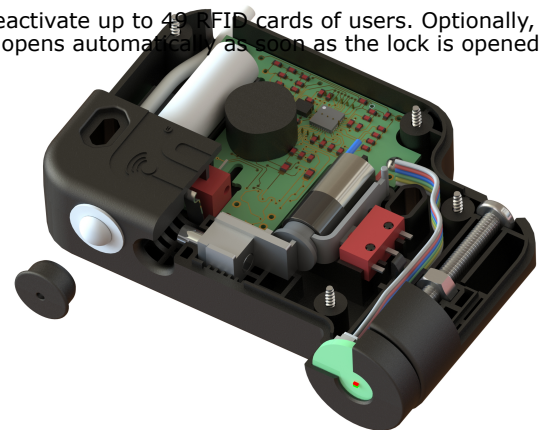
**Procedure:** The customer places his valuables in a free locker, closes the door and occupies this locker by briefly holding the card to the lock. The lock locks and the LED status indicator changes to red. If the card is held against the lock again, the lock opens again, the customer can remove the valuables and the LED display changes back to green. Thus, the locker is ready for the next customer.

**Use at:** Fitness studio, SPA areas, employee lockers

Private mode / fixed assignment of the RFID cards

With the programming card, the administrator can activate and, if necessary, deactivate up to 49 RFID cards of users. Optionally, the FIT lock can also be equipped with a Push-To-Open / Tip-On. Thus the door opens automatically as soon as the lock is opened by the user and there is no need for a handle on the door.

**Use at:** Staff cabinets, office cabinets



## Special solutions

Due to our production team in Austria, we are very flexible in the production of special solutions such as:

- Bluetooth control instead of RFID cards (can also be controlled with your own app)
- DUAL with RFID and Bluetooth Technology
- 2V or 12V for external control with relay
- Feedback contact (door open / closed)

The FIT lock enables a free choice, any free locker can be occupied with any RFID key (card/ chip) with 13,56 MHz, Mifare Technology.

## Features:

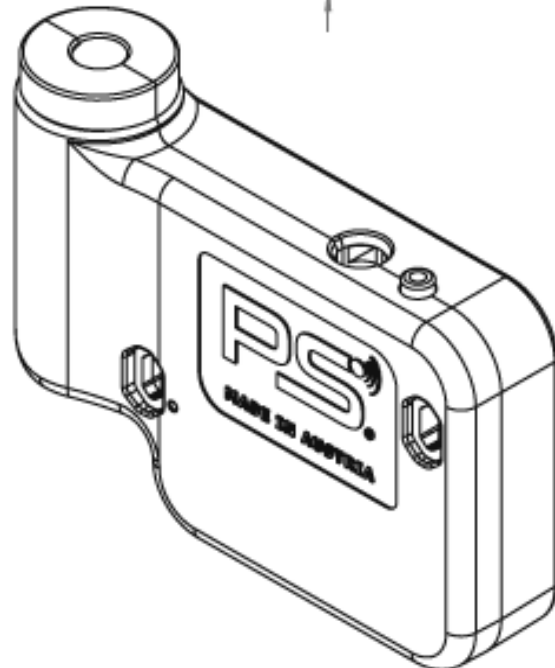
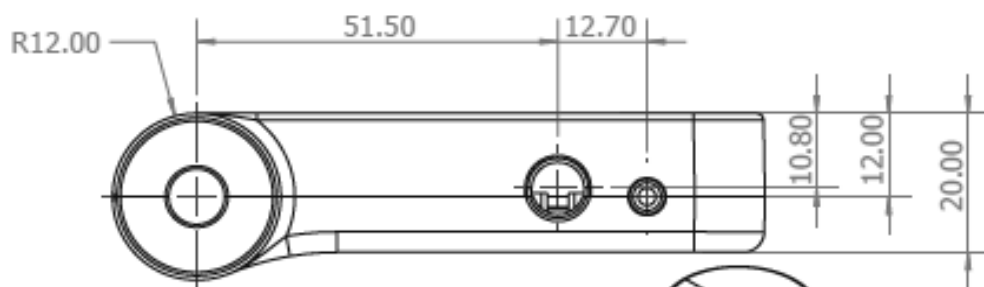
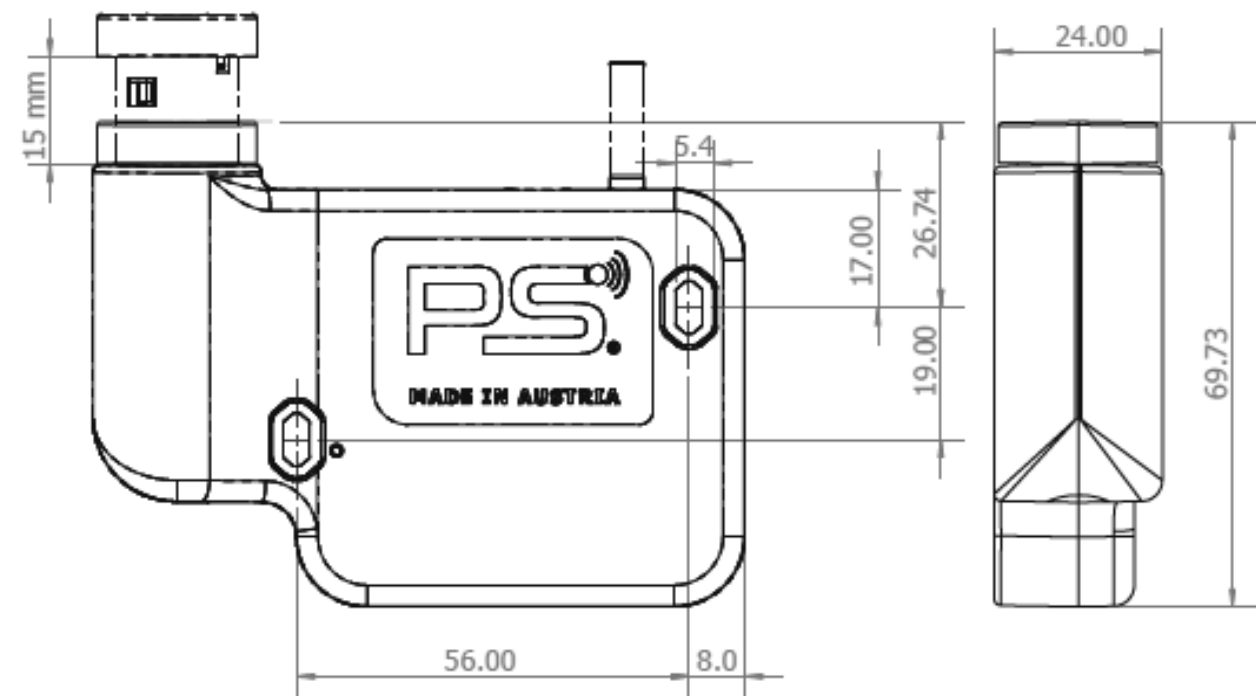
- Ideal for use in public areas, gyms or employee lockers.
- The locker cannot be occupied until the door is closed and an RFID key is presented
- Several lockers can also be occupied with one RFID key.
- When not mounted, the lock can be tested with the locking part inserted.

## RFID - Activating the programming card

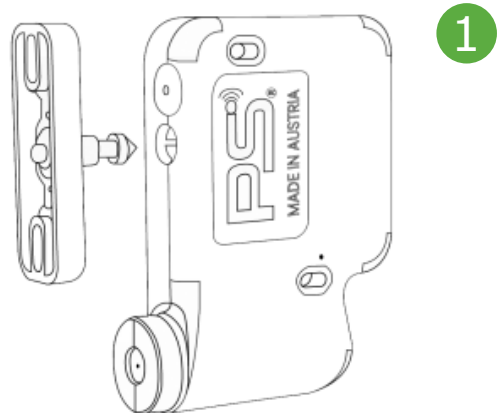
Before Mounting

- Press the white button in the middle on the back side of the lock.
- The lock will make a ticking sound (signal). Place the card to the lock within 3 seconds during the signal.
- Two short ascending tones will confirm that the programming card has been saved successfully.

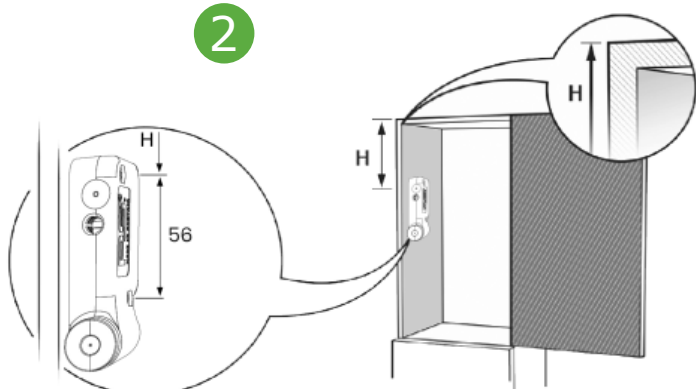




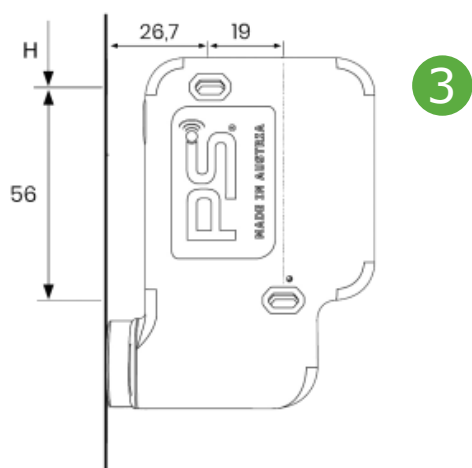
# INSTALLATIONS INSTRUCTIONS



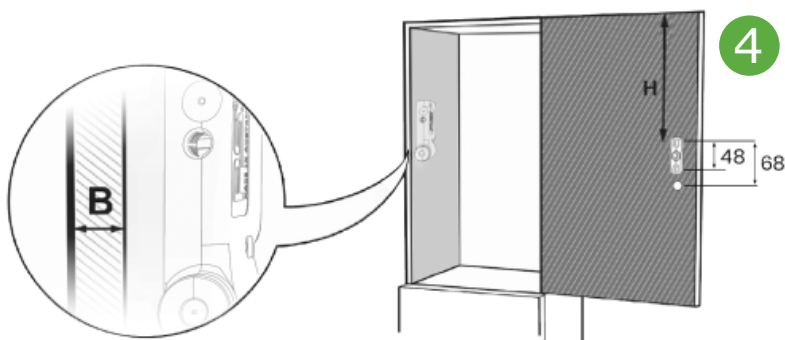
1



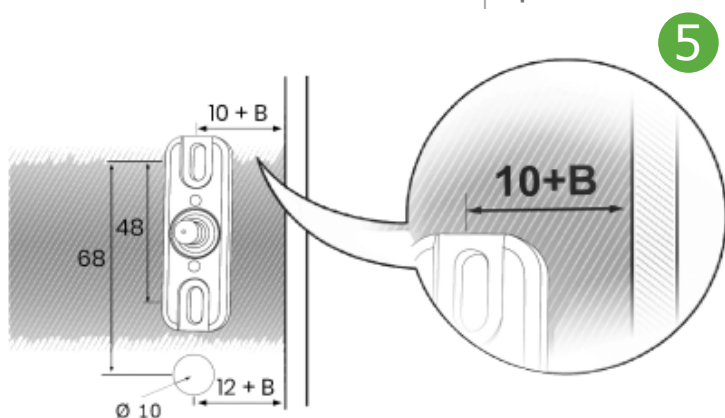
2



3

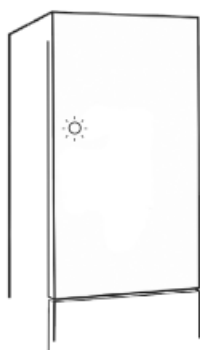


4



5

LED - sign



green - free  
red - occupied



Antenna - adjustment

